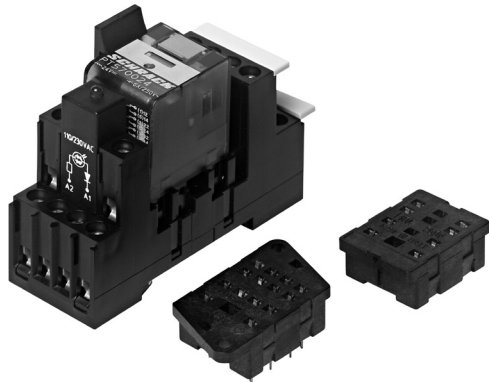


Accessories Miniature Relay PT

and similar design: relay heights 29 / 34.6 / 35.2 / 36.6 / 37.6mm



F0233-A

Features

- Easy replacement of relays on a densely packed DIN rail
- High quality rising clamp terminals
- Captive combination terminal screws
- No reduction of protection class or creepage/clearance with plastic retainer
- Simple plug-in indicator- and protection modules
- White snap-on tags

Accessories for sockets:

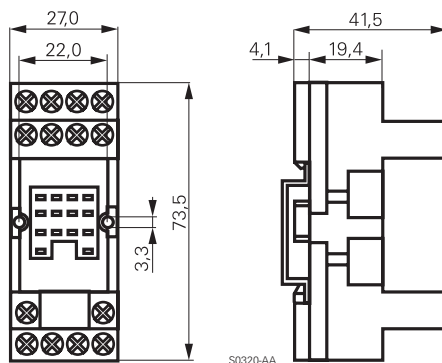
- Retaining clip
- LED- and protection modules
- Marking tags

Dimensions in mm

PT DIN-rail socket with screw type terminals



F0234-A



S0320-AA



Technical data

Rated current	4-pole	6 A
	3-pole	10 A
	2-pole	12 A
Rated voltage	250 Vac	
Insulation cat. (VDE 0110b)	C / 250 Vac	
Ambient temperature	-45...+70 °C	
Protection category	IP 20	
Protection against accidental contact meets	VBG 4	
Wire cross section	2 x 2.5 mm ²	
	with bootlace crimp 2 x 1.5 mm ²	
Terminal torque	0.5 Nm	
	max. 0.7 Nm	
Packaging unit	50 pcs.	

DIN-rail socket with screw type terminals

Type

YPT 78 702	DIN-rail socket with screw type terminals, 2 pole
YPT 78 703	DIN-rail socket with screw type terminals, 3 pole
YPT 78 704	DIN-rail socket with screw type terminals, 4 pole
YPT 78 110	DIN-rail socket with screw type terminals, 4 pole package with protection diode module

Accessories for YPT 78 702, YPT 78 703, YPT 78 704, YPT 78 110

Type

YPT 16 016	Plastic clip PT, HC28
PT 28 800	Metal clip PT, HC28
YPT 16 040	Marking tag

LED- and Protection Modules for YPT 78 702, 78 703, 78 704, 78 110

Easy insertion of module into the socket

Wiring in parallel to the coil

Type

YMFDG 230	Protection diode (A1+, A2-), 6/230 VDC
YMRCW 024	RC-network 6...60 Vac
YMRCW 230	RC-network 110...230 Vac
YMVAW 024	Varistor 24 Vac
YMVAW 230	Varistor 230 Vac

LED red		LED green	
YMLRA 024	YMLGA 024	LED 6...24 Vdc/Vac	
YMLRD 024-A	YMLGD 024	LED 6...24 Vdc w. prot.diode (A1+, A2-)	
YMLRD 024		LED 6...24 Vdc w. prot. diode (A1-, A2+)	
YMLRW 230	YMLGW 230	LED 110...230 Vac	

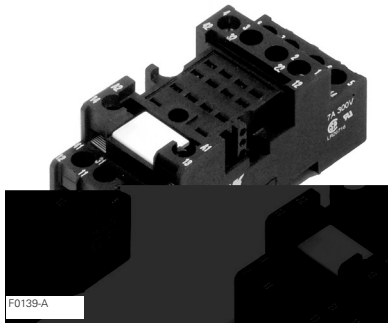


F0231-A

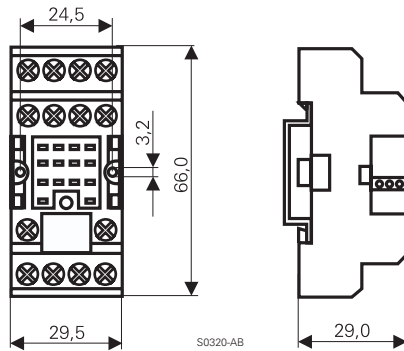


F0232-A

RA 78 728 DIN rail socket with screw-type terminals, 4 pole



Retaining clip PT 28 800



Dimensions in mm



Technical data

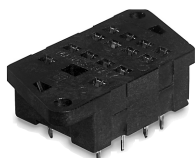
Rated current	7 A
Rated voltage	250 Vac
Dielectric strength coil/cont.	>3000 V _{rms}
Insulation cat. (VDE 0110b)	C / 250 Vac
Ambient temperature	-45...+70 °C
Protection category	IP 20
Protection against accidental contact meets	VBG 4
Wire cross section	2 x 2.5 mm ²
with bootlace crimp	2 x 1.5 mm ²
Terminal torque	0.5 Nm
max.	0.7 Nm
Packaging unit	25 pcs.

Accessories Miniature Relay PT

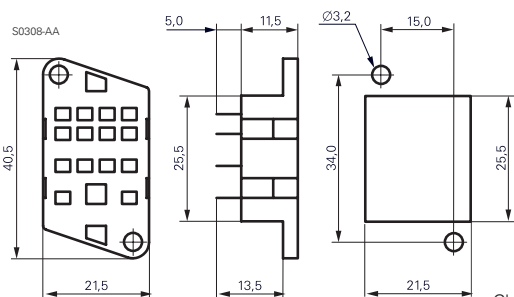
and similar design: relay heights 29 / 34.6 / 35.2 / 36.6 / 37.6mm

Dimensions in mm
View on solder pins

PT 78 600 Socket with solder terminals, 4 pole



F0132-A



Chassis cut-out

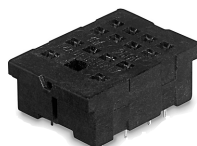
Technical data

Rated current	10 A
Rated voltage	250 Vac
Dielectric strength coil/cont.	>1500 V _{rms}
Ambient temperature	-40...+70 °C
Packaging unit	25 pcs.

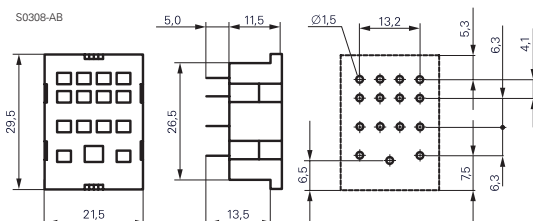
PT 78 604 4 pole Socket with PCB terminals

PT 78 603 3 pole

PT 78 602 2 pole



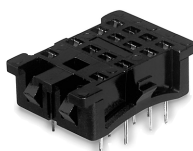
F0133-A



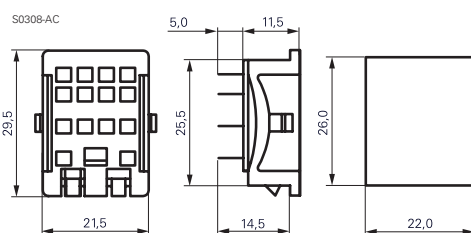
Technical data

Rated current	10 A
Rated voltage	250 Vac
Dielectric strength coil/cont.	>1500 V _{rms}
Ambient temperature	-40...+70 °C
Packaging unit	25 pcs.

PT 78 601 Socket with solder terminals, 4 pole



F0134-A



Chassis cut-out

Technical data

Rated current	10 A
Rated voltage	250 Vac
Dielectric strength coil/cont.	>1500 V _{rms}
Ambient temperature	-40...+70 °C
Packaging unit	25 pcs.

PT sockets

Type

PT 78 600	Socket with solder terminals, 4 pole
PT 78 602	Socket with PCB terminals, 2 pole
PT 78 603	Socket with PCB terminals, 3 pole
PT 78 604	Socket with PCB terminals, 4 pole
PT 78 601	Socket with solder terminals, 4 pole

Accessories for PT 78 600, PT 78 601, PT 78 602, PT 78 603, PT 78 604

Type

PT 28 802	Metal retaining clip PT, relay height 29 mm
ZG 28 800	Metal retaining clip, relay height 36 mm